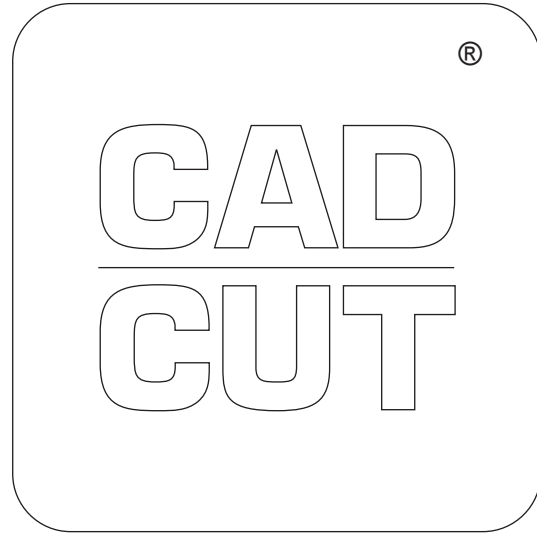


# CAD-CUT® PREMIUM PLUS SUBLISTOP



## POLYURETHANE FLEX MATERIAL WITH A SLIGHTLY ADHESIVE CARRIER.

This film provides a layer of Sublistop preventing any sublimation of the polyester colour. The material is very easy to weed, and will be suitable for several print proofs.



## AVAILABLE IN

50 cm x 25 m rolls

## RECOMMENDED FABRICS

- 100% polyester
- 100% sublimated polyester
- Polyester-cotton blends
- Polyester caps
- Polyester mesh

## CUTTING NOTES

You should always test cut prior to any production run. Remember cutter settings will need to be adjusted as the blade ages. For optimal cutting and weeding, maintain a line thickness of at least 2,5 mm for lettering and logos.

## APPLICATION INSTRUCTIONS

- Temperature: 130°C
- Time: 10 sec.
- Pressure: medium
- (#4-6 on Hotronix®)
- Peel: cold

## MULTI-COLOUR DESIGNS

Apply background for 3-5 seconds, peel carrier cold. Repeat for additional colours. Finish with final application of 18-20 seconds. Peel cold.

## ACCESSORIES RECOMMENDED

- Grip Cover Sheet
- Cover Sheet - Non-Sticky
- EZ Weeder®

## CARE INSTRUCTIONS

Mashine wash up to 40° C using mild detergent. Do not use bleach. Dry at normal dryer settings on household machines. Do not dry-clean. Can be directly ironed.

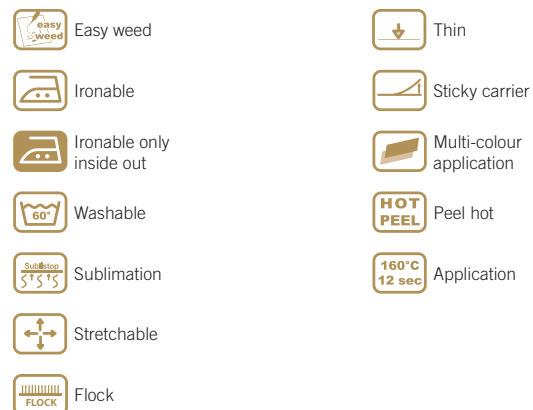
## STORAGE

Store in cool, dry area. Avoid direct heat, sunlight and humidity.

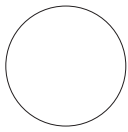
## DETAILS



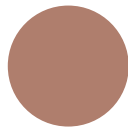
## KEY



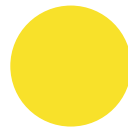
# CAD-CUT® PREMIUM PLUS SUBLISTOP



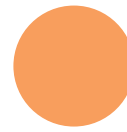
**001**  
white



**005**  
cream  
ca. Pant. 4655c



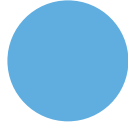
**110**  
yellow  
ca. Pant. 012c



**185**  
light orange  
ca. Pant. 1495c



**200**  
red  
ca. Pant. 186c



**320**  
light blue  
ca. Pant. 298c



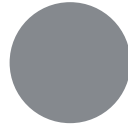
**380**  
turquoise  
ca. Pant. 321c



**422**  
light green  
ca. Pant. 362c



**730**  
grey  
ca. 7543c



**815**  
silver  
ca. Pant. 877c



**115**  
gold  
ca. Pant. 871c