

THERE ARE HEAT PRESSES AND THEN THERE'S

# HOTRONIX®

STAHL'S  
**Hotronix**®

**PRODUCT CATALOG**

# PROUDLY MADE IN THE USA

Born from the specific requirements of heat transfer materials, Hotronix® has been taking the guesswork out of heat applying since the 1980s. Now stronger and more advanced than ever, Hotronix® continues to engineer and produce the world's best-selling heat presses and accessories.

Proudly made in the USA, Hotronix® looks into the future of heat press innovation in an ever-changing industry to help your business become an efficient, profit-generating machine.

STAHL'S  
**Hotronix®**

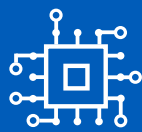


INDUSTRY  
INNOVATORS



BLUE RIBBON  
CUSTOMER SERVICE





TECHNOLOGY  
DRIVEN



MADE  
IN THE USA

## More Than a Heat Press 4-5

**360 IQ® Hat Press™** 6

**Power Platen™** 7

## Hotronix® Heat Presses 8-11

Dual Air Fusion IQ™ 8

Air Fusion IQ™ 9

Table Top Air Fusion IQ™ 9

Fusion IQ™ 9

SPRINT® MAG Clam 10

SPRINT® MAG Cap 10

Sports Ball Heat Press 10

The MAXX™ Clam 11

The MAXX™ Cap 11

## Accessories 12-13

Laser Alignment System 12

Heat Press Caddie™ Stand 12

Heat Press Caddie™ Shelves 12

STAHL'S' EZ Weeding™ Table 13

Heat Printing Equipment Cart 13

## Platens 14-15

The Right Platen for Your Heat Press 14

Quick Change Platens 15

Interchangeable Cap Platens 15

Platen Covers 15

## Contact 16



# MORE THAN A HEAT PRESS

Every Hotronix® FUSION™ comes equipped with the new Fusion IQ™ control board that features advanced wireless technology, letting you interact with your heat press anywhere at any time with the web-based portal. This line of technologically advanced presses provides your business with insights into job and operator performance, allowing you to make proactive, data-driven changes in real time.



# HOW DID THE WORLD'S BEST-SELLING HEAT PRESS GET EVEN BETTER?



By Adding Wireless Technology You Can  
Manage Your Business From Anywhere.

## **TRACK HEAT PRESS USAGE**

Make sure you're getting the most out of your heat press. Track how much time your heat press is working vs. sitting idle.

## **DISCOVER THE PRODUCTIVITY OF EACH HEAT PRESS**

Access real-time reporting and adjust your production capacity as needed.

## **TRACK THE PERFORMANCE OF EACH EMPLOYEE**

Gain inside into the way your employees work, if there are any application issues. Manage permissions for accurate application without added supervision.

## **FOLLOW TOTAL IMPRESSIONS**

The Fusion IQ™ measures every preheat and every heat application so you stay up-to-date on the number of times your heat presses were engaged.

## **UTILIZE PRESET APPLICATIONS FOR POPULAR ITEMS**

Eliminate mistakes with factory-installed presets, or create your own to accurately apply the types of transfers and films your customers are ordering.

## **SET UP EXCEPTIONS**

See how many times an operator went outside a preset application. Avoid production missteps to maintain the quality and durability of your products.

# INTRODUCING THE 360 IQ™ HAT PRESS™

## HIGH PROFIT, HIGH IMPACT HATS. ONE MACHINE.

Successfully print on all sides of a hat without removing it from the press. The one-size-fits-all molded platen eliminates crease lines, and a heated lower platen makes it the perfect solution for applying emblems, appliqué, and patches. Best of all, it comes equipped with advanced IQ™ technology allowing you to track your business in real time.

## FEATURES & BENEFITS

### UPPER & LOWER HEAT

Heat from the lower platen makes application of transfers easy with dependable, quality results.

### 360° PRINTING

Print the front, back, and sides without removing the hat from the platen. No need to change platens with the one-size-fits-all platen. More Placements = More Profit.

### NO HEAT PRESS CREASE

The uniquely designed molded lower platen forms to the shape of any hat, eliminating the heat press crease on decorated hats.

### NO SCORCHING

Control the upper and lower platens independently. Reduce heat from the upper platen to protect the hat.

### 360 IQ™ Hat Press

240 volt • 5 amps / 800 watts

Shipping:

22 kg • 63 L x 35 W x 63 H

Art. Nr. 163694



# HOTRONIX®

# POWER PLATEN™

## THE POWER TO ELIMINATE SCORCHING — FOR GOOD.

The Power Platen™ applies heat directly beneath the transfer for a quicker bond between adhesive and fabric, applying less heat to the face of heat-sensitive garments. Compatible with 40 x 50 cm Hotronix® Auto Clam, MAXX® Clam, and Air Fusion IQ™ heat presses\*, the Power Platen™ is available in four interchangeable sizes, each with a built-in pillow for the right fit, no matter what you're decorating.

## FEATURES & BENEFITS

### THREADABLE

Makes heat press fully Threadable when used with a Heat Press Caddie™ Stand.

### LIGHTWEIGHT

Weighs 40% less than the Heated Lower Platen for easy maneuvering around your shop.

### MULTIPLE SIZES

Do more with your heat press with four platen sizes to ensure a great press on whatever you're decorating.

### BUILT-IN PILLOWS

Quickly get a solid pressure when applying over zippers, buttons, or seams.

### COOL TO TOUCH

Insulating properties keep bottom of platen cool-to-the-touch while concentrating heat to the required area.



#### Controller

240 volt • 3,2 amps / 750 watts  
Shipping:  
2,3 kg • 26 L x 22 W x 21 H  
Art. Nr. 163534

#### 15 x 15 cm

240 Volt • 0,4 Amps/ 88 Watts  
Shipping:  
2,7 kg • 16 L x 16 W x 12 H  
Art.Nr. 163533

#### 40 x 50 cm

240Volt • 3,2 Amps/ 750 Watts  
Shipping:  
12 kg • 42 L x 52 W x 12 H  
Art.Nr. 163530

#### 15 x 51 cm

240 Volt • 1,1 Amps/ 275 Watts  
Shipping:  
5,4 kg • 16 L x 53 W x 12 H  
Art.Nr. 163532

#### 28 x 38 cm

240 Volt • 1,6 Amps/ 390 Watts  
Shipping:  
5,9 kg • 28 L x 38 W x 12 H  
Art.Nr. 163531

#### Power Platen™ Set (Includes Controller)

Shipping:  
28 kg • 66L x 50 W x 35 H  
Art.Nr. 163570

Requires a dedicated 20-amp circuit

*\*Not compatible with Hotronix® Fusion IQ® or draw presses. One or more patent and/or patents pending.*

# HOTRONIX® HEAT PRESSES

## DUAL AIR FUSION IQ™ PRODUCTIVITY OPTIMIZED

Built for ultimate heat printing efficiency, the Dual Air Fusion IQ™ provides the functionality of two presses with dual 40 x 50 workstations. Program the press to preheat on station A and complete final application on station B, automatically adjusting time and pressure as it shuttles between workstations. It's a smooth, quiet, and effortless operation controlled by the push of a button and tap of the foot pedal. Simply power on and choose between dual or independent operation.

The Dual Air Fusion IQ™ also comes standard with a Laser Alignment System, assuring your job is on target every time.

The laser system seamlessly integrates into each workstation and is controlled entirely through the touch screen.

### Dual Air Fusion IQ™ (2) 40 x 50 cm Quick Change lower platens

240 Volt • 15 Amps / 3500 Watts

Shipping:

115 cm L x 115 cm W x 86 cm H

Net weight: 120 kg; gross weight: 200 kg

Art-Nr. 162908

*Requires air compressor (not included)  
with minimum 1 horsepower and 5-gallon  
hold tank. Uses 3.8 CFM.*





## AIR FUSION IQ™

### AIR POWERED FOR EFFORTLESS OPERATION

The Air Fusion IQ™ offers a two-button operation which locks the upper platen down, applying accurate, even pressure, then automatically swings open to create a heat-free workspace. Patented Auto Adjust Pressure™ automatically adjusts to the thickness of the item you're printing. Program your time to change from preheating to final application. With up to four time and pressure settings, it's not just possible — it's automatic.

#### Air Fusion IQ™ 40 x 50 cm

240 Volt • 15 Amps / 3500 Watts

Shipping: 121 cm L x 102 cm W x 154 cm H

Net weight: 115 kg; gross weight: 125 kg

Art-Nr. 125167

*Requires air compressor (not included) with minimum 1/2 horsepower and 2.5-gallon hold tank. Uses 2.3 CFM.*



## TABLE TOP AIR FUSION IQ™

### SPACE-SAVING TABLETOP DESIGN

Take everything you love about our Fusion IQ™, add the power of an air compressor, the compact size of a tabletop heat press, and you have the Table Top Air Fusion IQ™. With an upper platen that operates with the touch of a button, operator fatigue is a thing of the past.

#### Table Top Air Fusion IQ™ 40 x 50 cm

240 Volt • 15 Amps / 3500 Watts

Shipping: 95 cm L x 63 cm W x 68 cm H

Net weight: 72 kg; gross weight: 82 kg

Art-Nr. 125303

*Requires air compressor (not included) with minimum 1/2 horsepower and 2.5-gallon hold tank. Uses 2.3 CFM.*



## FUSION IQ™

### #1-SELLING HEAT PRESS WORLDWIDE

In the decorating business, it's all about customization, and that's what we had in mind when we engineered the Fusion IQ™. Switch between the draw and swing motions depending on workspace, user preference, or garment. Touch screen technology allows you to program an unlimited number of presets. Add the compatibility of optional Quick Change Platens, and you'll be decorating more than ever.

#### Fusion IQ™ 40 x 50 cm

240 Volt • 15 Amps / 3500 Watts

Shipping: 90 cm L x 57 cm W x 60 cm H

Net weight: 60 kg; gross weight: 65 kg

Art-Nr. 013651



## SPRINT® MAG 28 X 38 CM

The 28 x 38 cm Auto Open Clam is perfect for shops with limited space. This lightweight, compact design is also a great choice for heat printing at off-site events.

### 28 x 38 cm

240 Volt • 4,5 Amps / 1000 Watts  
Shipping: 90 cm L x 63 cm W x 53 cm H  
Net weight: 28 kg; gross weight: 33 kg  
Art-Nr. 013645

*28 x 38 cm Quick Change lower platen*



## SPRINT® MAG 40 X 40 CM

The 40 x 40 cm Auto Open Clam is a popular choice and favored by many shops that print full-size transfers.

### 40 x 40 cm

240 Volt • 7,5 Amps / 1800 Watts  
Shipping: 90 cm L x 63 cm W x 53 cm H  
Net weight: 34 kg; gross weight: 39 kg  
Art-Nr. 013646

*40 x 40 cm Quick Change lower platen*



## SPRINT® MAG 40 X 50 CM

This best-selling full-size clam's large surface accommodates the application of names and numbers on jerseys, all-over sublimation prints, and oversized transfers. Compatible with nearly every optional Quick Change Platen, it's the most versatile heat press available.

### 40 x 50 cm

240 Volt • 7,5 Amps / 1800 Watts  
Shipping: 90 cm L x 63 cm W x 53 cm H  
Net weight: 40 kg; gross weight: 45 kg  
Art-Nr. 013647

*40 x 50 cm Quick Change lower platen*



**Also available in a hover model.**

**Order the SPRINT® MAG Clam as a Hover Press™, which is designed for curing inks during the DTG decorating process. Switch from Hover to Auto Open mode as needed.**

### Hover Press™

240 Volt • 7,5 Amps / 1800 Watts  
Shipping: 90 cm L x 63 cm W x 53 cm H  
Net weight: 40 kg; gross weight: 45 kg  
Art-Nr. 013648

## SPRINT® MAG XS

If you're heat printing small items or limited areas of apparel, here's the perfect press. Lightweight and portable, it's ideal for small decorating jobs in the craft market or other mobile heat printing opportunities.

### 15 x 15 cm

240 V, 360 W, 1,5 Amp  
Shipping: 64 cm L x 38 cm W x 53 cm H  
Net weight: 12 kg; gross weight: 16 kg  
Art-Nr. 010938



## SPRINT® MAG CAP

Decorate with the reliability and accuracy of our SPRINT® MAG Cap press. A cap hold-down device pulls the front of the cap taut, securing it while providing a smooth surface for heat application. Decorate a variety of cap styles with four optional Quick Change Platens.

### SPRINT® MAG Cap

240 V, 500 W, 2 Amp  
Shipping: 64 cm L x 38 cm W x 53 cm H  
Net weight: 13,5 kg; gross weight: 16 kg  
Art-Nr. 013649



## SPORTS BALL PRESS

The Sports Ball Press is designed to easily customize or personalize inflatable sports balls. Balls can be customized for use as trophies, to commemorate a special event, or as a promotional giveaway.

### Sports Ball Press

240 V, 360 W, 1,5 Amp  
Shipping: 65 cm L x 37 cm W x 69 cm H  
Net weight: 22 kg; gross weight: 25 kg  
Art-Nr. 163082



## THE MAXX™ CLAM

The MAXX® is the best-selling low-cost heat press. Trust these budget-friendly machines to outperform every press in their class.

Whether you're just getting into heat printing, heat printing part time, or need a back-up press, these durable machines are the perfect partner.

### 28 x 38 cm

240 Volt • 4,5 Amps/ 1000 Watts  
Shipping: 90 cm L x 63 cm W x 53 cm H  
Net weight: 28 kg; gross weight: 33 kg  
Art-Nr. 110876

*28 x 38 cm Quick  
Change lower platen*



### 38 x 38 cm

240 Volt • 7,5 Amps/ 1800 Watts  
Shipping: 90 cm L x 63 cm W x 53 cm H  
Net weight: 31 kg; gross weight: 36 kg  
Art-Nr. 013657

*38 x 38 cm Quick  
Change lower platen*



### 40 x 50 cm

240 Volt • 7,5 Amps/ 1800 Watts  
Shipping: 90 cm L x 63 cm W x 53 cm H  
Net weight: 40 kg; gross weight: 45 kg  
Art-Nr. 013658

*40 x 50 cm Quick Change  
lower platen*



## THE MAXX™ CAP

This manually operated clamshell design is economical and easy to operate. The MAXX® Cap offers a digital time and temperature display, and a cap hold-down device keeps caps securely in place during heat printing.

### The MAXX™ Cap

240 Volt • 2 Amps / 500 Watts  
Shipping: 64 cm L x 38 cm W x 53 cm H  
Net weight: 13,5 kg; gross weight: 16 kg  
Art-Nr. 013659



# HEAT PRESS ACCESSORIES

## HEAT PRESS LASER ALIGNMENT SYSTEM

For fast, accurate, and precise placement, choose the Hotronix® Heat Press Laser Alignment System. This tabletop unit features four adjustable lasers and is compatible with any brand of heat press. Included is the Laser Alignment Wizard™, a heavy-duty, spiral-bound template with five popular layouts. Simply align each bulb to the guides for accurate positioning.

Shipping: 56 cm L x 34 cm W x 19 cm H

Net weight: 3 kg; gross weight: 6 kg

Art-Nr. N-KIT 3-1298



## HEAT PRESS CADDIE™ STAND

The Heat Press Caddie™ Stand is an adjustable pedestal stand that converts any Hotronix® SPRINT® MAG or MAXX™ Clam into a threadable heat press. Self-leveling casters provide portability and stability, allowing you to take advantage of mobile heat printing opportunities.

Shipping: 84 cm L x 84 cm W x 29 cm H

Net weight: 27 kg; gross weight: 30 kg

Art-Nr. 125187 Stand

Shipping: 60 cm L x 35 cm W x 18 cm H

Net weight: 10,5 kg; gross weight: 12 kg

Art-Nr. 1-2410 Counter Caddie



*Also available in a countertop version.*

## HEAT PRESS CADDIE™ SHELVES

Designed to easily attach to your Hotronix® Heat Press Caddie™ or Air Fusion IQ™ pedestal stand, these sturdy, adjustable shelves keep your heat transfer products, blanks, and accessories within reach. Both trays can be rotated in either landscape or portrait position, offering you convenience and flexibility.



Shipping: 51 cm L x 37 cm W x 17 cm H

Net weight: 10 kg; gross weight: 11,4 kg

Art-Nr. 140027

## STAHL'S EZ WEEDING™ TABLE

The bond between a heat transfer material and its carrier lessens when heated. This patented table heats materials slightly to promote removal from the carrier, resulting in easier weeding with less material breakage.

- 20" x 36" weeding area — a full yard of weeding production
- Three temperature settings — 43°C-54°C for fine-detailed designs, up to 60°C for maximum productivity on larger jobs
- Top clamp holds materials in place while weeding
- Built-in storage compartment
- Fits most production tables and countertops



Shipping: 109 cm L x 81 cm W x 20 cm H

Net weight: 14 kg; gross weight: 18 kg

Art-Nr. 163072

## HEAT PRINTING EQUIPMENT CART

Add more counter space to your shop with this heavy-duty steel cart.

Designed to hold the Dual Air Fusion IQ™, it can also be used with other heat presses, small vinyl cutters, printers, and more. Pivoting wheels allow for easy movement around shops or at events, and lock to ensure stability.

- Powder-coated, scratch-resistant, heavy-duty steel
- Holds up to 270 kg.
- Adjustable height, from 43-89 cm
- Lockable, pivoting wheels

Shipping: 97 cm L x 62 cm W x 67 cm H

Net weight: 62 kg; gross weight: 67 kg

Art-Nr. 162776



## GRIP COVER SHEET

Wax coated cover sheet

A wax coated cover sheet, produces a slight matt finish when you reprint your heat transfer. Each sheet can be reused many times, not suitable for use with sublimation.

Dimensions approx. 38x48 cm,

1 PKG - 25 PCS

Art-Nr. 013685



## GRIP RUBBER MAT

High quality silicone cloth that absorbs heat very well. Ideal for printing transfers on shoes. It produces a slightly textured finish. (Attention: reduces the application heat up to 20°C, please take note of this when printing.)

Dimensions approx. 46x56 cm

Art-Nr. 162216



## NON-STICK COATED COVER SHEET

Ideal to use when printing on sublimated Polyester.

Very robust non-stick coated cover sheet, any dirt can be easily removed. Results in a slightly shiny finish with a delicate texture to the surface.

Dimensions approx. 46x49 cm

Art-Nr. 013683



## PRINT PERFECT PAD

Raise the printing area – for a perfect print!

While heat printing pillows allow the zippers and seams to depress into the pillow, print perfect pads actually raise the printing area to work around these elements. They are also the recommended accessory for screen printed or digital transfers because they maintain even pressure.

APPROX. 20X25 CM

Art-Nr. 162122

APPROX. 13X15 CM

Art-Nr. 162121

APPROX. 9X40 CM

Art-Nr. 162120



## NON STICK COATED PRESSURE PAD

Perfect prints on uneven underground.

For uniform distribution of pressure, when applying over items such as buttons, zippers etc. and for applying close to V-Necks. The pads are 2cm thick and contain inner foam.

The outer pillow is made from a non-stick material.

APPROX. 13X46 CM

Art-Nr. 013678

APPROX. 16X20 CM

Art-Nr. 013679

APPROX. 25X25 CM

Art-Nr. 013680

APPROX. 51X41 CM

Art-Nr. 013681

BEST VALUE – SET OF 4

Art-Nr. 013682



## LED PIN, LED WEEDER UND TWEEZERS

Perfect Tool for frequent weeding.

Pin and Weeder have an ergonomic grip for comfortable holding. The handle is made from high quality, sturdy plastic to reduce the weight. The light-up LED on the tip provides excellent lighting for easier weeding. LED Pin with straight metal tip, LED Weeder with hook. The tweezers with their fine, curved tip completes the set.

LED PIN

Art-Nr. 163398

LED WEEDER

Art-Nr. 163399

TWEEZERS

Art-Nr. 163400

SET

Art-Nr. 163401



## THERMO-TAPE

heat resistant tape. Holds your transfer in place before and during pressing.

- used to ensure that the transfer remains correctly positioned on the garment for application
- manufactured from heat resistant materials
- it is perfect for use with cap transfers
- approx. 66m long

Art-Nr. 013688



## THERMO DISPENSER

- robust and durable construction
- the dispenser has non-slip feet on the base

Art-Nr. 013689

## EZ WEEDER

tool to weed your graphics.

This handy tool lets you easily weed CAD-CUT® and CAD-COLOR® graphics.

Art-Nr. 013689



## SQUEEGEE

A squeegee is a straight-edged, rubber tool that is used to eliminate wrinkles and air bubbles when applying Magic Mask®, to ensure an even application.

Art-Nr. 013696



## HEAT ERASER

HEAT RESISTANT

- suitable for cleaning the lower and heat platen
- ideal to cool down your transfers before removing the carrier

Art-Nr. 013691



## HEAT PLATEN CLEANER

- Removes leftovers and staining from textiles and heat transfer vinyls from your lower and heat platen
- available in packs of once

Art-Nr. 013690



## COMPRESSOR BLACK PANTHER P100-24 AL

The compressor is quiet as a whisper and necessary while using an Air Fusion™ or a Dual Air Fusion™.

- Connection: 230V / 50 Hz
- Enginge output: 0,7 KW
- Air suction line: 100 L/min
- Air power output: 74 L/min
- Printing performance: max. 8 Bar
- Container volume: 24 L
- Sound emission: 42 dB(A)/1m
- Shipping: 80 cm x 39 cm x 67 cm
- Net weight: 49 kg; gross weight: 52 kg
- Art-Nr. 162849



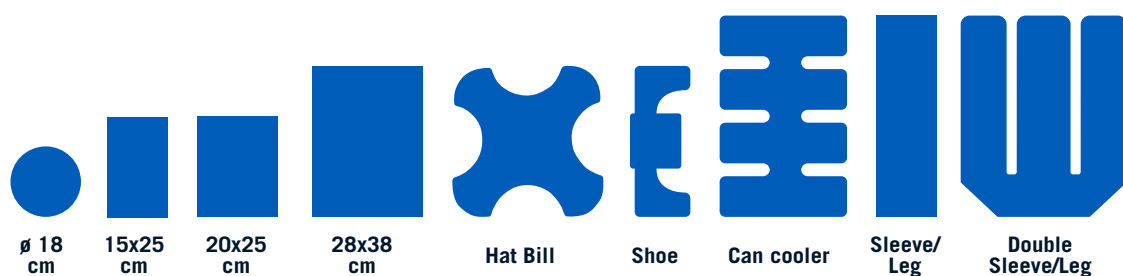
## COMPRESSOR SIL AIR 50/24

The compressor is quiet as a whisper and necessary while using an Air Fusion™.

- Connection: 230V / 50 Hz
- Enginge output: 0,34 KW
- Air suction line: 50 L/min
- Air power output: 37 L/min
- Printing performance: max. 8 Bar
- Container volume: 24 L
- Sound emission: 40 dB(A)/1m
- Shipping: 49 cm x 46 cm x 57 cm
- Net weight: 27,5 kg; gross weight: 31,5 kg
- Art-Nr. 013660



# THE RIGHT PLATEN FOR YOUR HEAT PRESS



	ø 18 cm	15x25 cm	20x25 cm	28x38 cm	Hat Bill	Shoe	Can cooler	Sleeve/ Leg	Double Sleeve/Leg
<b>DUAL AIR FUSION IQ™</b>	●	●	●	●	●	●	●	●	●
<b>AIR FUSION IQ™</b>	●	●	●	●	●	●	●	●	●
<b>FUSION IQ™</b>	●	●	●	●	●	●	●	●	●
<b>SPRINT® MAG CLAM</b> (40 x 50 cm)	●	●	●	●	●	●	●		●
<b>SPRINT® MAG CLAM</b> (40 x 40 cm)	●	●	●	●	●	●			
<b>SPRINT® MAG CLAM</b> (28 x 38 cm)	●	●	●	●		●			
<b>THE MAXX™ CLAM</b> (40 x 50 cm)	●	●	●	●	●	●	●		●
<b>THE MAXX™ CLAM</b> (38 x 38 cm)	●	●	●	●	●	●			
<b>THE MAXX™ CLAM</b> (28 x 38 cm)	●	●	●	●		●			

Compatible with heat presses manufactured after 2014. Custom platens available. Call +49(0)683197330 for a quote.



## QUICK CHANGE PLATENS

Use interchangeable platens to decorate a wide variety of apparel and accessories. Platens are compatible with Hotronix® and MAXX® brand presses.

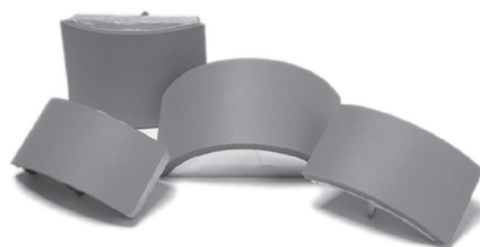
∅ 18 cm round	Art-Nr. PL7R
15 x 25 cm	Art-Nr. PL6x10
20 x 25 cm	Art-Nr. PL8x10
28 x 38 cm	Art-Nr. PL11x15
Hat bill	Art-Nr. PLHBILL
Shoe	Art-Nr. PLSHOE
Can Cooler	Art-Nr. PLCAN
FUSION™ Sleeve/Leg	Art-Nr. PLLS
NEW! Double Sleeve/Leg	Art-Nr. PLDLS



## INTERCHANGEABLE CAP PLATENS

Interchangeable cap platens make decorating hats easy. Whether you have a low-profile or oversized hat, we have a platen that fits. For heat press machines purchased prior to 2012, visit [stahls.de](http://stahls.de).

6 x 8 cm - for baby caps	Art-Nr. PLCAP2x3
9 x 16 cm - for standard caps	Art-Nr. PLCAP3x6
7 x 16 cm - for low-profile caps	Art-Nr. PLCAP2x6
7,5 x 14,5 cm - for lower-crown caps	Art-Nr. PLCAP3x5
10 x 16 cm - for full-crown ball caps	Art-Nr. PLCAP4x6
10 x 22 cm - for oversized caps	Art-Nr. PLCAP4x8



## PLATEN COVERS

**Quick Slip Lower Platen Protector** - Fits tightly over your lower platen and makes it easy to pull the fabric over it by reducing friction between the fabric and the rubber mat. Protects your lower platen from stains.

28x38 cm	Art-Nr. 013677
38x38 cm	Art-Nr. 013674
40x40 cm	Art-Nr. 013675
40x50 cm	Art-Nr. 013676



**Upper Platen Cover** - Protection for your heat platen plate. Easy to clean and does not absorb sublimation colour.

UPPER PLATEN COVER 40x50 cm	Art-Nr. 125288
-----------------------------	----------------





# CONTACT US

## **STAHL'S' EUROPE GMBH**

Dieselstraße 62  
66763 Dillingen  
Germany

**Web**  
[stahls.de](http://stahls.de)

**STAHL'S'**  
EUROPE • AFRICA • MID EAST

STAHL.S.DE | +49 (0) 68 31/97 33 0



**Proudly Made in the USA**

Hotronix® is a registered trademark of Stahls' Inc. with numerous patents/patents pending. ©Stahls' Inc. 2020



**STAHL'S**<sup>®</sup>  
EUROPE • AFRICA • MID EAST

Dieselstraße 62  
D-66763 Dillingen

Phone: +49 (0) 68 31 / 97 33 0  
Fax: +49 (9) 68 31 / 97 33 45  
E-mail: [info@stahls.de](mailto:info@stahls.de)