

MAXX[®] CAP

OPERATOR'S MANUAL



STAHL'S
Hotronix[®]

When using your heat press, basic precautions should always be followed, including the following:

1. Read all instructions.
2. Use heat press only for its intended use.
3. To reduce the risk of electric shock, do not immerse the heat press in water or other liquids.
4. Never pull cord to disconnect from outlet, instead grasp plug and pull to disconnect.
5. Do not allow cord to touch hot surfaces and allow heat press to cool completely before storing.
6. Do not operate heat press with a damaged cord or if the equipment has been dropped or damaged. To reduce the risk of electric shock, do not disassemble or attempt to repair the heat press. Take it to a qualified service person for examination and repair. Incorrect assembly or repair could increase the risk of fire, electric shock, or injury to persons when the equipment is used. Power supply cord must be disconnected before cleaning or servicing press.
7. This appliance is not intended for use by persons (including children) with reduced physical, sensory or mental capabilities, or lack of experience and knowledge, unless they have been given supervision or instruction concerning use of the appliance by a person responsible for their safety.
8. Close supervision is necessary for any heat press being used by or near children. Do not leave equipment unattended while connected.
9. To avoid burns, do not touch hot metal parts or the heated platen during use.
10. To reduce the likelihood of circuit overload, do not operate other high voltage equipment on the same circuit.
11. If an extension cord is necessary, then a 20-ampere rated cord should be used. Cords rated for less ampereage may overheat. Care should be taken to arrange the cord so that it cannot be pulled or tripped over.
12. Keep hands clear of the upper heat press platen during lock down as the pressure may cause injury.
13. Heat press should be placed on a sturdy, suitable stand at least 91,5 cm L x 60 cm W x 75 cm H.
14. Work area must be kept clean, tidy and free of obstructions.

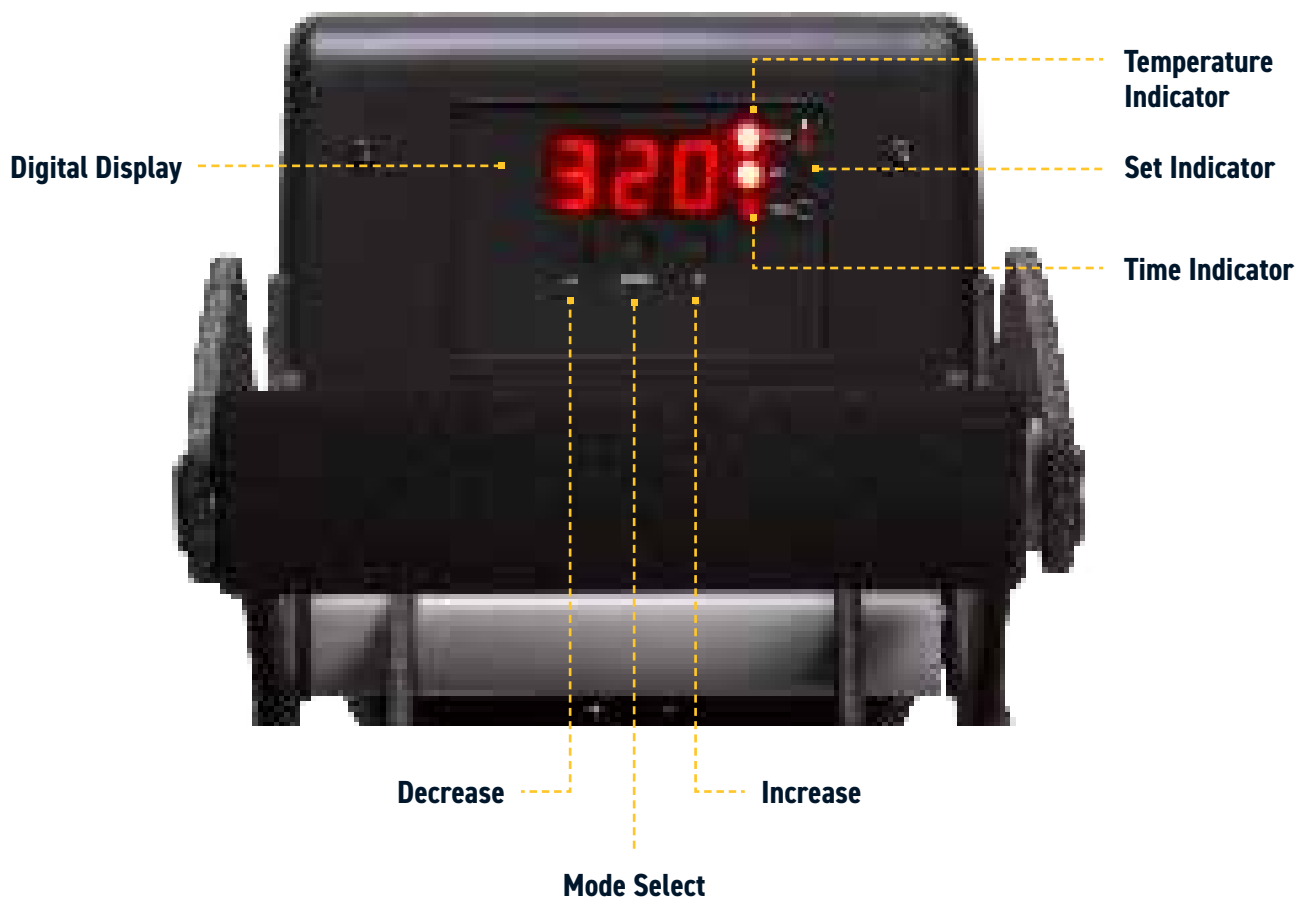
Safety Instructions

Safety Instructions	2
Machine View	4
Control Panel Guide	5
Operating Instructions	6-8
Connecting the System	6
Start Up/Shut Down	6
Adjusting Temperature	7
Adjusting Time	7
Adjusting Pressure	8
Printing/Pressing	8
Electrical Schematic	9
Parts Location Guide	10
Replacement Parts List	11
Contact us	12



Located on the back of the press

Control Panel Guide



Connecting the System



Connect the power cord into a properly grounded electrical outlet with a sufficient amperage rating.

Voltage

120 volt requires a full 20-amp grounded circuit.

220 volt requires a full 10-amp grounded circuit.

Extension Cords should be as short as possible and not less than 12 gauge. Heavy duty cords are recommended.

Circuits with less than 10 amps or have other high demand equipment or heat presses plugged in should not be used.

Note: If the supply cord is damaged, it must be replaced by the manufacturer, its service agent or a similarly qualified person in order to avoid hazard. Use SJT type rated 300 V cord for replacement.

CAUTION

Failure to follow these instructions will cause:

1. Erratic controller functions.
2. Inaccurate displays and slow heat up.
3. The circuit breaker to disengage.

Start Up/Shut Down



Locate the lift handle and position the heat platen in the UP position.



Locate the Power ON/OFF Switch on the side of the press, then turn the Power Switch ON.

Operating Instructions

Adjusting Temperature



Press the Mode Select button in the center of the Control Panel.

The (SET) and (TEMP) lights located next to the display will illuminate.

Press the (+) or (-) button to raise or lower the temperature setting.

The temperature can be set from 205°F (96°C) to 430°F (220°C).

The LED Display will show changes as you make them.

Note: The temperature indicator will only display temperatures 200°F (93°C) and up.

Adjusting Time



Once you have adjusted the temperature, press the Mode Select button again to advance to Time Mode.

The (SET) and (TIME) lights will illuminate.

Adjust the time in the same manner you adjusted the temperature.

Select the desired time and push the Mode Select button again to exit.

All lights will be off and the press will return to PRINT mode.

Adjusting Pressure



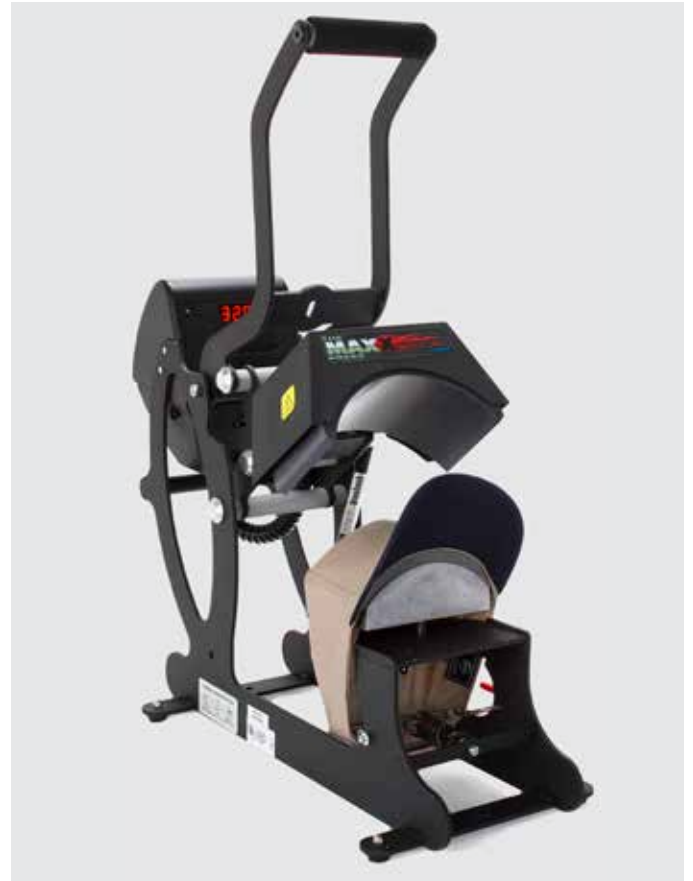
The Pressure Adjustment Knob is located directly under the lower platen.

Turn the knob clockwise to increase pressure and counterclockwise to decrease pressure.

***Remember** to allow for the thickness of your cap when adjusting the pressure.*

WARNING: Structural damage caused by excessive pressure is not covered under the limited warranty!

Printing/Pressing

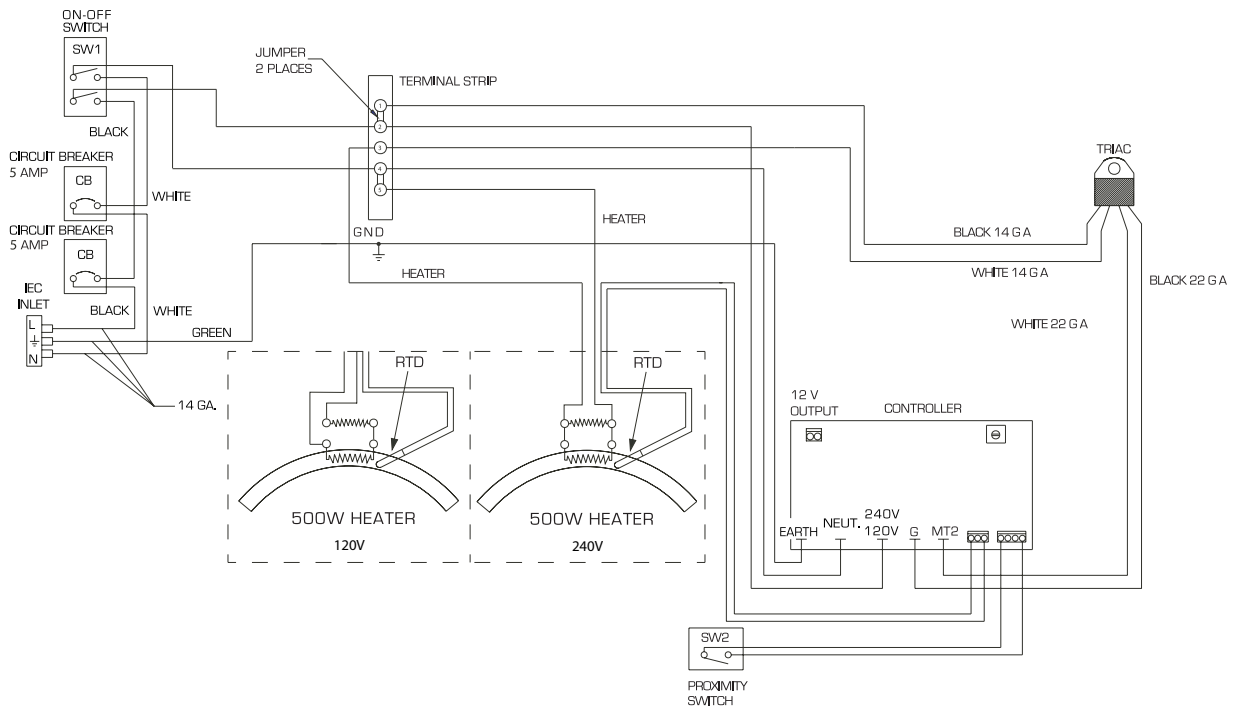


Once your equipment has reached the designated temperature:

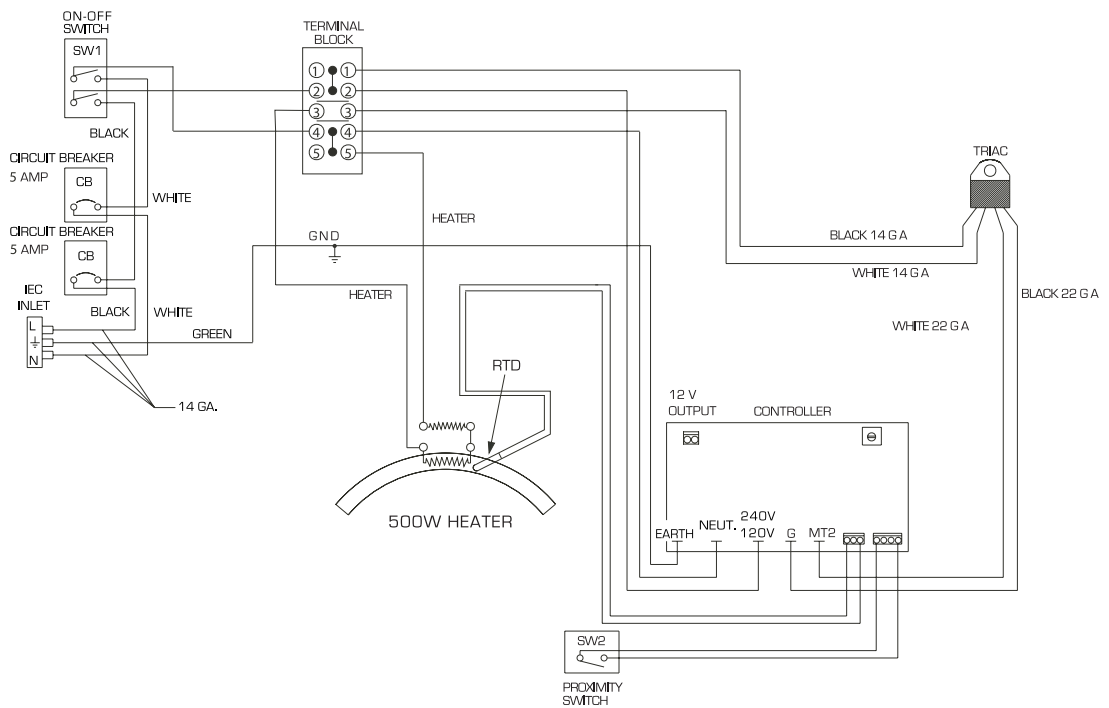
- Pull the Cap Hold Down Lever up and towards the operator and load the cap onto the lower platen.
- Pull out the sweatband and position the cap so it clears the upper platen when the machine is closed.
- Push the Cap Hold Down Lever down and away from the operator to stretch the cap and keep it from shifting.
- Position your design and lower and lock the heat platen into the PRESS position to begin the automatic timing process.
- The timer will automatically count down and audibly signal you to lift the heat platen into the UP position when the print cycle is complete.

Electrical Schematic


US 120V/240V VERSION



CE 230V VERSION





 = wear parts

Replacement Parts List

ITEM #	PART #	DESCRIPTION	QTY
1	4-1172-B	Control Housing, MAXX	1
3	1-2018	Controller Overlay, MAXX	1
4	1-2105	Grommet, 9/32" ID 3/8" OD	2
5	3-1011-235	Screw, Sheet Metal #6 x 1/2"	6
6	2-1006-50	Nut, #6-32 Hex with Lockwasher	9
7	3-1011-130	Screw, Pan Phillips #4-40 x 1"	2
8	1-1759	Power Inlet	1
9	1-2087	Power Switch	1
10	3-1011-19	Screw, Machine #6-32 x 1/2"	7
11	3-1011-25	Screw, Machine #6-32 x 1/4"	5
12	1-1353	Conduit Fitting, 1/2" Topaz Straight Twist-On	2
13	Kit 3-6946	Controller Kit, MAXX	1
14	2-1006-51	Nut, #4-40 with Tooth Washer	8
15	2-1661	Controller Bracket, STX MAXX	1
16	1-1059	TRIAC	1
17	3-1011-22	Screw, Machine #4-40 x 3/8"	6
18	1-1290	Terminal Block, 5 Contact High Voltage	1
20	1-1211	Proximity Switch	1
21	1-2317	Circuit Breaker 5A (CAP 6x6)	1
24	KIT 3-6910-1	Handle Assembly, MAXX Cap	1
26	1-2440	Shaft Collar, STX6LR Medium	2
27	1-2085-4	Magnet Bracket, MAXX Cap	1
28	1-1219	Proximity Magnet	1
29	2-1055-26	Steel Pin, 1/2" x 6.45"	2
30	1-1048-3	Washer, 1/2" Nylon	4
31	1-1107-1	Hub Cap 1/2"	8
32	2-1055-9	Steel Pin, 1/2" x 5-7/8"	1
33	1-1049-1	PVC Spacer, 1/2" x 3.30"	2
34	1-1049-14	PVC Spacer, 1/2" x 0.70"	2
35	2-1006-2	JCN - NUT	2
36	1-1042-1	All Thread Pin	1
37	1-1049-11	PVC Spacer, 1/2" x 5"	1
38	1-1540	Foam Grip, Black	1
39	KIT 3-6957	Lift Link, MAXX 6x6 & Cap	2

ITEM #	PART #	DESCRIPTION	QTY
40	1-1023	Adjustment Spindle, STX 6x6	1
41	1-1095	Knob, Black Plastic 3/8"-16	1
42	1-1051	Bronze Washer	1
44	2-1050-C	Cap Platen, Standard 3.5" x 6"	1
45	1-1050	Silicone Pad, Cap 3.5" x 6" Gray	1
46	2-1042	Cap Hold Down	1
47	1-1089	Cap Hold Down Vinyl Cover	1
48	1-1073	Spring	1
51	1-2246	Gas Spring 11x15 & 6x6 & Cap	1
52	KIT 3-6907-1	Base, MAXX Cap	1
59	3-1011-252	Screw, Pan Phillips #6-32 x 3/4"	1
60	1-1939	Ball Stud 10mm	2
61	2-1006-20	Nut, Hex Nylok 5/16"-18	3
62	3-1011-182	Acorn Nut 10-32	5
63	1-1256	Rubber Foot	6
64	3-1011-164	Screw, Button Socket Head #10-32 x 1/2"	5
65	1-1085	Eyebolt	1
66	2-1006-56	Nut, Nylok #8-32	1
67	KIT 3-6908-1	Heater Arm Assembly, MAXX Cap	1
70	1-1049-5	PVC Spacer, 1/2" x 3.80"	1
71	2-1055-29	Steel Pin, 1/2" x 4.69"	1
72	1-1049-3	PVC Spacer, 1/2" x 5/8"	2
73	3-1011-55	Screw, Shoulder 3/8" x 1-1/4" w/ 5/16"-18 Thread	1
74	1-2253	Heat Platen, Cap 120V/220V	1
76	1-1017-2	Pin, Clevis 3/8" x 1-5/8"	2
77	1-1043-2	Retaining Clip, Rue Ring	2
79	3-1011-87	Screw, SS Phillips #8-32 X 1/4"	5
80	1-1272-1	Temperature Probe	1
81	1-2076	Thermostat Disc	1
82	3-1011-98	Screw, SS Sheet Metal #4 X 1/4"	2
83	2-1663	Heat Platen Cover, Cap	1
84	1-1048-2	Conduit, STX MAXX Cap, 13"	1
85	1-1063	Washer, Plastic Finishing	2
86	3-1011-217	Screw, Flat Head Phillips #10-24 x 7/16"	2

 = wear parts

CONTACT US

STAHL'S' Europe GmbH

Dieselstraße 62
66763 Dillingen
Germany

Technical Support & Customer Service

+49 (0) 68 31/97 33 0

Email

info@stahls.de

Web

stahls.de

STAHL'S'
EUROPE • AFRICA • MID EAST

This document includes multiple trademarks and describes equipment covered by many patents that are owned by GroupeSTAHL and/or its subsidiaries. GroupeSTAHL enforces its rights to protect these intellectual properties. ©2021