

# CAD-CUT® BASIC FILM



## SMOOTH AND MATTE PU MATERIAL THAT PROVIDES OPTIMAL OPACITY

There is no back-adhesive carrier which makes it perfect for large designs, numbers and letters as the film is so easy to weed.

Low cost - very easy to process (no need for capitalizing).



## AVAILABLE IN

50 cm x 25 m roll

## RECOMMENDED FABRICS \* Test before application!

- 100% Cotton
- 100% Polyester\*
- Polyester-Cotton blends

## CUTTING NOTES

Always test the cutting settings before production. Remember that the settings depend on the age of the blade used. To ensure optimum processing of the material, a **minimum line thickness of 1.5 mm** is required.

## APPLICATION INSTRUCTIONS

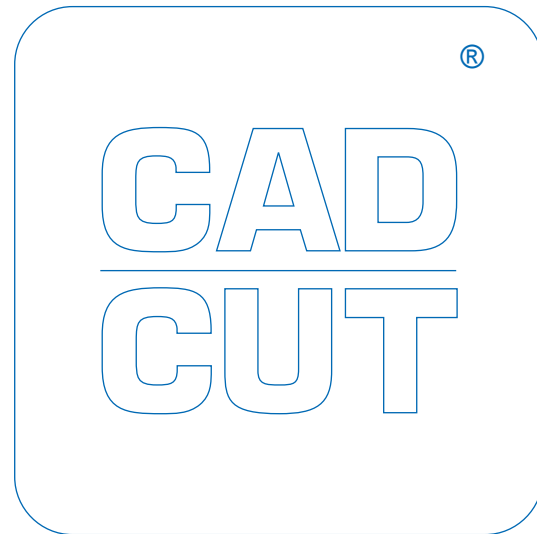
Temperature: 160° C  
Time: 10 sec.  
Pressure: Medium (#4-6 with Hottronix®)  
Carrier: Cold peel

## MULTI-COLOR DESIGNS

Print the background for 3-5 seconds, peel off the carrier cold. Repeat the process for each additional color. Print the last color for 18 - 20 seconds. Remove the carrier cold.

## ACCESSORIES RECOMMENDED

- Grip Cover Sheet
- Cover Sheet - Non-Sticky
- EZ Weeder®, LED Weeder, LED Pin or Tweezers



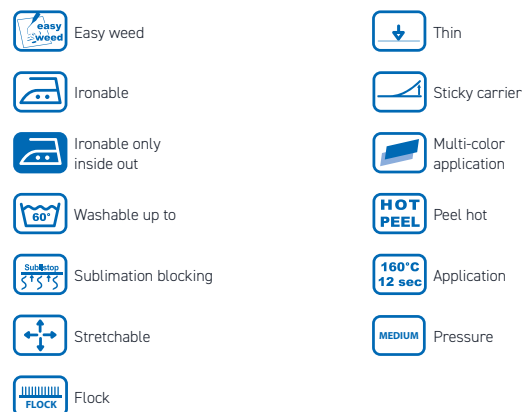
## CARE INSTRUCTIONS

Washable up to 60° C. Please do not use fabric softener or bleach. Wash inside out and iron.

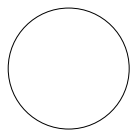
## STORAGE

Store in a cool, dry environment. Avoid direct heat or sunlight.

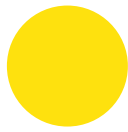
## DETAILS



# CAD-CUT® BASIC FILM



**001**  
white



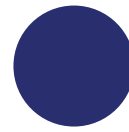
**110**  
yellow  
ca. Pant. 012c



**200**  
red  
ca. Pant. 186c



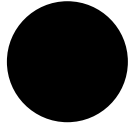
**300**  
royal blue  
ca. Pant. 286c



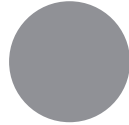
**350**  
navy  
ca. Pant. 532c



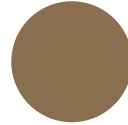
**400**  
green  
ca. Pant. 7727c



**700**  
black



**815**  
silver  
ca. Pant. 877c



**115**  
gold  
ca. Pant. 871c