

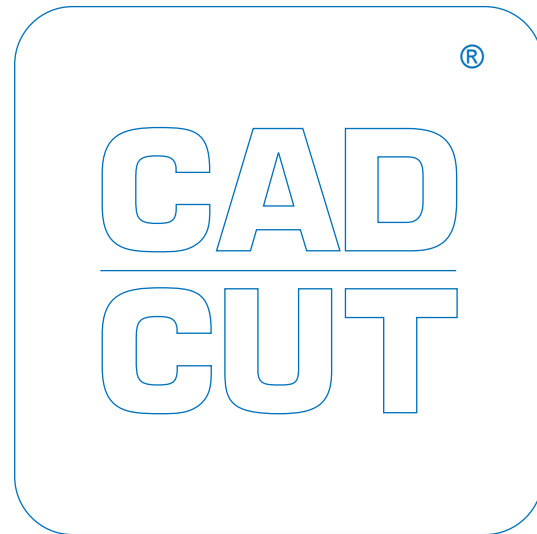
# CAD-CUT® HOLOGRAM



## ESPECIALLY DEVELOPED WITH THE FASHION INDUSTRY IN MIND

### – SURE TO MAKE AN IMPACT ON ANYONE

Flex film with glossy surface finish. Adhesive backing carrier. Easy to cut and weed. Perfect for setting fashionable accents.



## AVAILABLE IN

50 cm x 25 m roll

## RECOMMENDED FABRICS \* Test before application!

- 100 % Cotton
- 100 % Polyester\*
- Sublimation dyed polyester
- Cotton-Polyester blends

## CUTTING NOTES

Always test the cutting settings before production. The settings depend on the age of the knife used. To ensure optimum processing of the material. **Minimum line thickness of 1.5 mm.**

## APPLICATION INSTRUCTIONS

Temperature: 150° C  
Time: 10 sec.  
Pressure: Medium (#4-6 with Hotronix®)  
Carrier: Cold peel

## MULTI-COLOR DESIGNS

CAD-CUT® Hologram is not recommended for multi-layer applications.

## ACCESSORIES RECOMMENDED

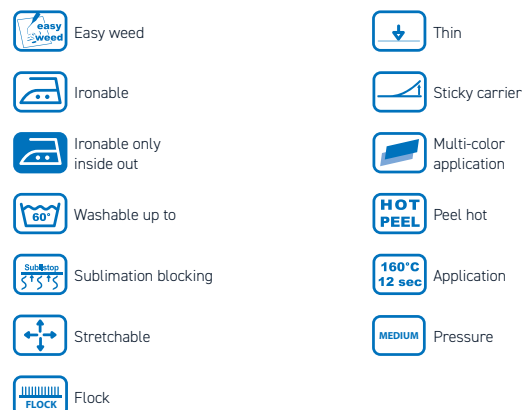
- Grip Cover Sheet
- Cover Sheet - Non-Sticky
- EZ Weeder®, LED Weeder, LED Pin or Tweezers

## CARE INSTRUCTIONS

Washable up to 40° C. Please do not use fabric softener or bleach. Suitable for tumble drying on a gentle setting. Wash inside out and iron.

## STORAGE

Store in a cool, dry environment. Avoid direct heat or sunlight.



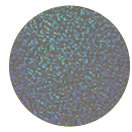
# CAD-CUT® HOLOGRAM



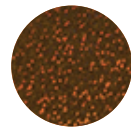
**900**  
rainbow



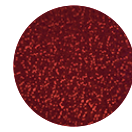
**901**  
spectrum



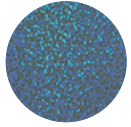
**902**  
sparkle silver



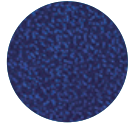
**903**  
sparkle gold



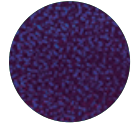
**904**  
sparkle red



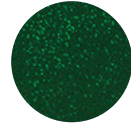
**905**  
sparkle light blue



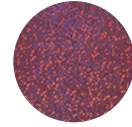
**906**  
sparkle blue



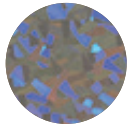
**907**  
sparkle purple



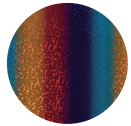
**908**  
sparkle green



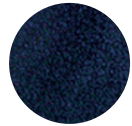
**909**  
sparkle pink



**913**  
crystal



**914**  
multi



**915**  
sparkle black